

PemkoHinge™

Continuous Geared Aluminum Hinges

CONTENTS:

What is PemkoHinge™	PH-2
PemkoHinge™ Attributes/Design Features.....	PH-2
Ordering Chart.....	PH-2
BHMA Certification Program	PH-3
Hospital Tip	PH-3
Cycle Requirements.....	PH-3
Weight Bearing.....	PH-3
UL Fire Labeling.....	PH-3
Electrical Modifications.....	PH-4
Options For Electrically Modified PemkoHinge™	PH-4
X-Series PemkoHinge™	PH-5
Offset Hinge	PH-6
Full-Mortise Hinges.....	PH-7
Special Full-Mortise Hinges.....	PH-8
Kawneer Full-Mortise Hinges.....	PH-9
Raised Gear Hinges.....	PH-9
Full-Mortise Safety Hinges.....	PH-10
Wide Throw Full-Mortise Hinges.....	PH-11
Wide Throw Half-Surface Hinges.....	PH-11
Half-Mortise Hinges.....	PH-12
Full Surface Center Pivot Hinge.....	PH-13
Full Surface Balanced Pivot Hinge.....	PH-13
Full-Surface Hinges.....	PH-13
Aluminum Hinges For Aluminum Doors Under 90 lbs.....	PH-14
Full Mortise Residential Hinges.....	PH-14
Firepins™	PH-15

INDEX:

<u>PRODUCT</u>	<u>PAGE</u>	<u>PRODUCT</u>	<u>PAGE</u>	<u>PRODUCT</u>	<u>PAGE</u>
AL_FM.....	PH-14	FS.....	PH-13	RS175.....	PH-14
AL_FS.....	PH-14	FS_BP.....	PH-12	SPFM.....	PH-8
FM.....	PH-7	FS_CP.....	PH-13	SPFM_SLF.....	PH-8
FM_RG.....	PH-9	HM.....	PH-12	SPFM_SLI.....	PH-8
FM_SF.....	PH-10	HS.....	PH-12	WT_FM.....	PH-11
FM_SLF.....	PH-7	HS_SF.....	PH-12	WT_HS.....	PH-11
FM_SLF138.....	PH-14	K_FM.....	PH-9	XF.....	PH-5
FM_SLI.....	PH-7	OS_FM.....	PH-6	XM.....	PH-5
FM_SLISF.....	PH-10	OS_HS.....	PH-6	X25M.....	PH-5

www.pemko.com

Memphis, TN USA • P.O. Box 18966 • Memphis, TN 38181

P: 800.824.3018 • F: 800.243.3656

Copyright © 2012, Pemko Manufacturing Co., an ASSA ABLOY Group company. All rights reserved.

Reproduction in whole or in part without the express written permission of Pemko Manufacturing Co. is prohibited.

80032-PH 7/12

PemkoHinge™

Continuous Geared Aluminum Hinges

CONTENTS:

What is PemkoHinge™	PH-2
PemkoHinge™ Attributes/Design Features.....	PH-2
Ordering Chart.....	PH-2
BHMA Certification Program	PH-3
Hospital Tip	PH-3
Cycle Requirements.....	PH-3
Weight Bearing.....	PH-3
UL Fire Labeling.....	PH-3
Electrical Modifications.....	PH-4
Options For Electrically Modified PemkoHinge™	PH-4
X-Series PemkoHinge™	PH-5
Offset Hinge	PH-6
Full-Mortise Hinges.....	PH-7
Special Full-Mortise Hinges.....	PH-8
Kawneer Full-Mortise Hinges.....	PH-9
Raised Gear Hinges.....	PH-9
Full-Mortise Safety Hinges.....	PH-10
Wide Throw Full-Mortise Hinges.....	PH-11
Wide Throw Half-Surface Hinges.....	PH-11
Half-Mortise Hinges.....	PH-12
Full Surface Center Pivot Hinge.....	PH-13
Full Surface Balanced Pivot Hinge.....	PH-13
Full-Surface Hinges.....	PH-13
Aluminum Hinges For Aluminum Doors Under 90 lbs.....	PH-14
Full Mortise Residential Hinges.....	PH-14
Firepins™	PH-15

INDEX:

<u>PRODUCT</u>	<u>PAGE</u>	<u>PRODUCT</u>	<u>PAGE</u>	<u>PRODUCT</u>	<u>PAGE</u>
AL_FM.....	PH-14	FS.....	PH-13	RS175.....	PH-14
AL_FS.....	PH-14	FS_BP.....	PH-12	SPFM.....	PH-8
FM.....	PH-7	FS_CP.....	PH-13	SPFM_SLF.....	PH-8
FM_RG.....	PH-9	HM.....	PH-12	SPFM_SLI.....	PH-8
FM_SF.....	PH-10	HS.....	PH-12	WT_FM.....	PH-11
FM_SLF.....	PH-7	HS_SF.....	PH-12	WT_HS.....	PH-11
FM_SLF138.....	PH-14	K_FM.....	PH-9	XF.....	PH-5
FM_SLI.....	PH-7	OS_FM.....	PH-6	XM.....	PH-5
FM_SLISF.....	PH-10	OS_HS.....	PH-6	X25M.....	PH-5

What is PemkoHinge™?

PemkoHinge™ consists of two full-height, paired and geared leaves. Each geared leaf rotates evenly from top to bottom riding on proprietary polymer blended bearings. The geared leaves and bearings are held together by a full-length channel cap. This assembly retains the smooth, clean lines of the door and frame, while easily supporting heavy vertical loads.

PemkoHinge™

SECURITY, SAFETY, PRIVACY, LOW WEAR AND TEAR

PemkoHinge™ Attributes:

- With a continuous hinge, typical alignment problems (such as door sag and binding) are eliminated
- The continuous hinge distributes load stress uniformly along the full length of the door and frame
- The gear design of the continuous hinge ensures symmetrical operation of each leaf
- ½ lb. or less operating force required to operate most doors, regardless of size
- Low operating force feature makes continuous hinges ideal for doors used by the physically challenged
- The continuous hinge, when installed on standard steel doors and frames, requires no additional reinforcement. However, hinge preps must have fillers installed for proper operation
- A high degree of security can be achieved for exterior openings or restricted spaces by using a continuous hinge. With the geared construction and the full-length channel cap, the common gap between the door and frame is sealed, which provides security against prying
- In addition, the continuous full-height hinge cap protects against pinching fingers in doors in public areas, particularly those where children are present
- Sight proof design of the continuous hinge provides privacy for lavatories, executive offices, or file rooms

PemkoHinge™ Superior Design:

- PemkoHinge™ has increased critical stress points of the hinge leaf extrusions providing additional strengths and rigidity to the completed product
- PemkoHinge™ bearing design eliminates premature wear, guarantees proper alignment, and requires fewer bearings to carry more weight. The bearing is produced for PEMKO using a chemical composition and injection process that provides a stronger, more accurately formed bearing
- PemkoHinge™ is designed with inter-meshing gear segments in the hinge which provide 50% more bearing surface resulting in less wear
- PemkoHinge™ goes through the anodizing process after completing all machining. This means the machined aluminum surfaces that are in direct contact with the bearing have a smoother, harder surface, thereby reducing wear
- PemkoHinge™ maintains uniform bearing spacing for the full length of the hinge even when lengths exceed 10'
- PemkoHinge™ uses #12-24 size fasteners instead of #10. (#12 Tek fasteners available upon request)
- PemkoHinge™ commercial models are ideal for use on lead lined doors (i.e. hospital X-ray rooms), without requiring special screw locations

How To Order (Hinge Part Designations)

Example: **D** | **SPFM** | **85** | **SLI** | **HD1**

Finishes	Hinge Types	Lengths	Hinge Options	Capacity
BL Black Anodized	AL_FM Aluminum Full-Mortise	79	"blank" Standard	"blank" Standard Duty
C Clear Anodized	AL_HS Aluminum Half-Surface	83	CP Center Pivot	HD1 Heavy Duty, Grade 1
D Dark Bronze Anodized	FM Full-Mortise	85	RG Raised Gear	HD3 Heavy Duty, Grade 3
G Gold Anodized	FS Full-Surface	95	SF Safety	
PW Painted White	HS Half-Surface	120	SL Short Leaf (residential only)	
SN Satin Nickel Anodized	RS138 Full-Mortise Residential: 1-3/8"		SLF Short Leaf Flush	
	RS175 Full-Mortise Residential: 1-3/4"		SLI Short Leaf Inset	
	SPFM Special Full-Mortise			
	WT_FM Wide Throw Full-Mortise			
	WT_HS Half-Surface			

BHMA Certification Program

This program was developed to establish product classifications through performance testing. Three grades (1, 2 and 3) of product classifications were established for continuous hinges, with three weight groups (150, 300 and 600) for each grade: Grade 3 being the lowest and Grade 1 being the highest classification. Each classification and weight group has a set of established cycle requirements and wear characteristics, with a minimum for vertical and lateral wear to establish a listing under a weight and grade classification, after the set number of cycles is completed.

Maximum Vertical Wear Allowable:

- Grade 3 = 0.105"
- Grade 2 = 0.030"
- Grade 1 = 0.020"



Maximum Lateral Wear Allowable:

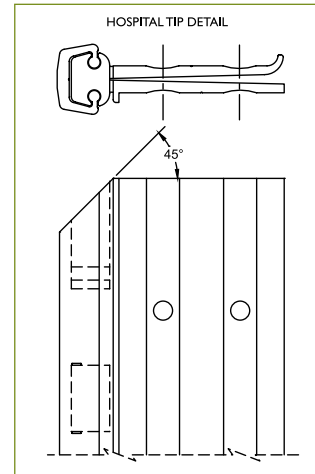
- All Grades = 0.062"

Cycle requirements range from Grade 3-600 requiring 100,000 cycles through Grade 1-150 requiring 2.5 million cycles.

For more information on certification testing or other product certification programs, please contact PEMKO Customer Service.

Hospital Tip

A special modification is available for certain hinges which provides an extra bearing at the top of the gear cap, leaving no opening. A 45° angled cut on the gear cap and leaf covers provides a safe environment for hospitals and correctional facilities.



Cycle Requirements - Per BHMA Standard ANSI/BHMA A156.26-2006

- Standard Duty Hinges (excluding _RS175 & _RS138) conform to Grade 3-150 and Grade 3-300
- HD3 Hinges conform to Grade 3-150, Grade 3-300, and Grade 3-600
- HD1 Hinges conform to Grade 2-150, Grade 1-300, and Grade 1-600
- 1100 Series and X-Series Hinges conform to Grade 1-150

Weight Bearing - Per BHMA Standard ANSI/BHMA A156.26-2006

- This information pertains to all commercial models
- Heavier weight can be carried; please contact Customer Service for applications other than those listed in the chart
- Special hinge reinforcements are not required as hollow metal door and frame manufacturers' standard are acceptable. Removal of hinge reinforcements in the door and frame is not advised. Hinge preps must have fillers installed

	Hinge Size	Number of Bearings	Door Weight
Residential Hinges	79" and 83"	7	90 lbs.
Standard Duty Hinges	83" and 85"	14	280 lbs.
	95"	16	320 lbs.
	120"	20	400 lbs.
Heavy Duty (HD1 & HD3) Hinges	83" and 85"	27	540 lbs.
	95"	31	620 lbs.
	120"	39	780 lbs.

UL Fire Labeled 3-Hour



- All models designated with these symbols are tested and certified by Underwriters Laboratories Inc.® (U.S.A. and Canada) to standards UL10B, UL10C and UBC7.2 (positive pressure) for up to and including a 3-Hour Fire Listing for all 4'0" x 10'0" and 8'0" x 10'0" door and frame assemblies. Fire listing certifications apply to all approved hollow metal and wood door assemblies in drywall or masonry wall construction
- Special FirePins™ are only required on 3-Hour assemblies. Please refer to page PH-15 for illustrations and information regarding the application of PEMKO FirePins™

- All hinges are supplied with standard fastener kits. Replacement kits/individual fasteners may be purchased separately
- TEK/TORX fasteners may be purchased separately. Full-mortise hinges require 40 each; half-surface hinges require 20 each; full-surface hinges require 12 each
- All half-surface and full-surface hinges are supplied with a snap cover for the door leaf. Replacement snap covers may be purchased separately
- Rain caps may be purchased separately

Electrically Modified Continuous Geared Hinges

Electrical Modifications

- PEMKO has vastly improved the cycle performance of the electrically modified hinge. Performance testing has shown that 3,000,000+ cycles can now be achieved using PEMKO's exclusive polyurethane-coated 4, 8, or 12 TRI-FLEX titanium copper alloy cables. Each cable is capable of carrying 16 amps continuous @ 24 volts in-rush for 820 milliseconds. When ordering, please use the "shorthand code" shown in the chart page PH-2. For example, if you require a Clear Anodized standard Full-Mortise hinge at 83" with Quick Connect transfer - 4-wire, modified 36 1/4" from the top, right hand, you would order a CFM83 with QC4 at 36 1/4" from top - RH

Options for Electrically Modified Continuous Geared Hinges

These options allow variable degrees of service to be performed at the specific locations of the current carrying cables by installing a serviceable/removable hinge which includes a removable module (SER), or installing a hinge with a pivoting accessible feature (ACC).

- Both options (SER & ACC) are available in 4 Wire (QC4), 8 Wire (QC8), 12 Wire (QC12) variants
- Available on FM, XM, XF, XI, X25M, FS, HS, KFM, SLF & SLI Models

Serviceable/Removable (SER) Module

The hinge is furnished to be installed in three sections allowing the current carrying cable to be serviced or replaced without removing the door from the frame. Additionally, the SER option allows the current carrying cables to be safely stored or delivered to the electrician or security contractor prior to the installation of the electrified hardware, eliminating the necessity of the electrician or security contractor being present when the doors are being hung.

Product Numbering Example: **CFM83HD x QC4-SER**

Accessible (ACC) Feature

The hinge is furnished to be installed in a single section with the leaves modified to pivot at the location of the current carrying cable and allow access to the cables and connected wiring.

Product Numbering Example: **CFM83HD x QC4-ACC**

Concealed Magnetic Monitoring (CM)

Concealed magnetic monitoring is also available with the SER and ACC options. Magnetic monitor is supplied with monitor and an adjustable magnet.

Product Numbering Example: **CFM83HD x CM-SER**
CFM83HD x CM-ACC

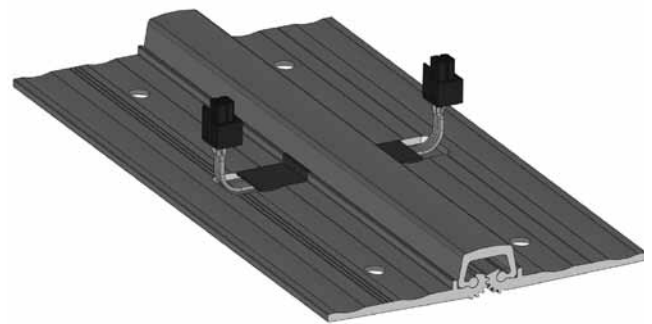
Customer Information Needed:

- Specify handing and prep location if other than PEMKO standard

Included:

- Molex connectors with ElectroLynx® are warranted for five (5) years. Molex connectors are included at each leaf for ease of electrical connection
- Each electrical prep is supplied with one 48" and one 120" cable lead

Hardwiring Made Easy™



Quick Connect Transfer For Full Mortise (FM) Hinges	QC4* 4 WIRE
	QC8* 8 WIRE
	QC12* 12 WIRE

Quick Connect Transfer For Full Surface (FS) & Half Surface (HS) Hinges	QC4_S* 4 WIRE
	QC8_S* 8 WIRE
	QC12_S* 12 WIRE

* Electrical Modifications Options Code	
Additional Length of Quick Connect Cable Leads	
Adjustable Concealed Magnetic Monitoring	CM
Power Transfer - Prep Only	PT

X-Series PEMKO Hinge

NEW!

- Thicker leaves than traditional continuous geared hinge and requires no additional clearance
- New X-Series hinge allows for a deeper cavity for electrical wires when ordering an electrified hinge

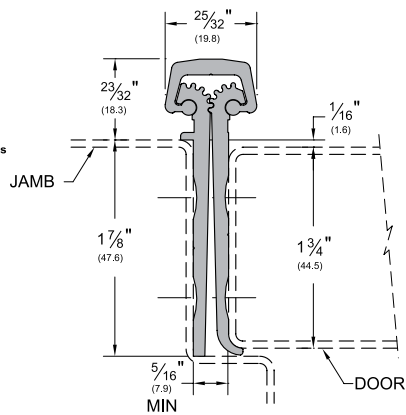
Full Mortise

XM_

AVAILABLE FINISHES: C, D



LISTED
Door Hinges
76Y2



Full Mortise for 2 1/2" Thick Door

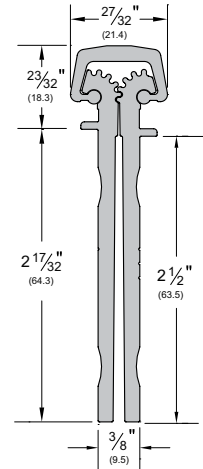
- Wider hinge leaves to accommodate doors 2 1/2" thick

X25M_

AVAILABLE FINISHES: C, D



LISTED
Door Hinges
76Y2



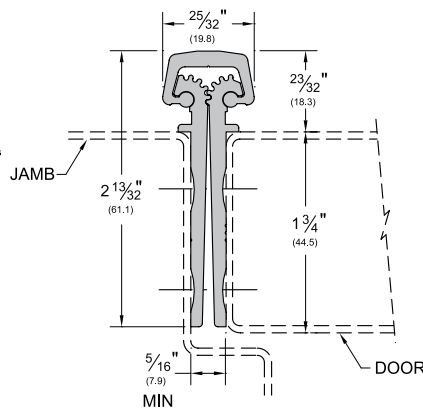
Short Leaf Flush

XF_

AVAILABLE FINISHES: C, D



LISTED
Door Hinges
76Y2



Short Leaf Inset

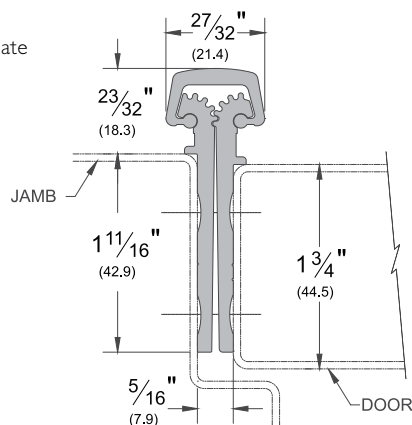
- Wider hinge leaves to accommodate doors 2 1/2" thick

XI_

AVAILABLE FINISHES: C, D



LISTED
Door Hinges
76Y2



AVAILABLE FINISHES FOR PRODUCTS SHOWN ON THIS PAGE (see General Information section for finish chart)
C (Clear Anodized) D (Dark Bronze Anodized)

NEW!

Offset Hinges

- Used when the door needs to swing out of the opening

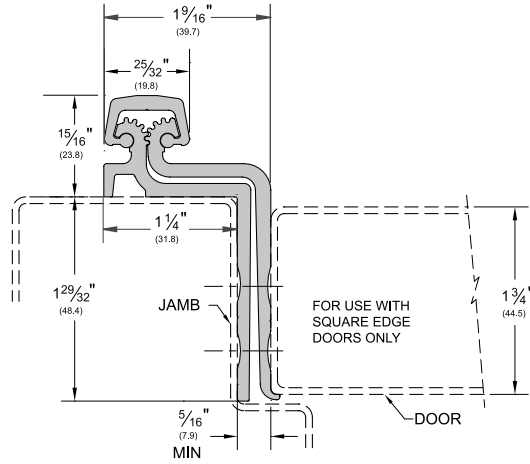
Offset Full Mortise

_OS_FM

AVAILABLE FINISHES: C, D



LISTED
Door Hinges
76Y2



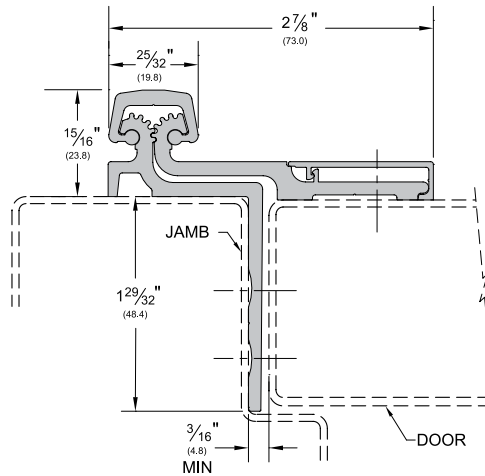
Offset Half Surface

_OS_HS

AVAILABLE FINISHES: C, D



LISTED
Door Hinges
76Y2



AVAILABLE FINISHES FOR PRODUCTS SHOWN ON THIS PAGE (see General Information section for finish chart)
C (Clear Anodized) D (Dark Bronze Anodized)

Full-Mortise Hinges

- Full-Mortise units are designed mainly for new door applications and are applied to the frame rabbet and door face to conceal both leaves

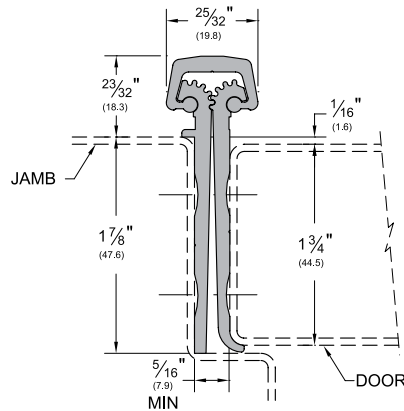
Full Mortise

_FM

AVAILABLE FINISHES: BL, C, D, G, PW, SN



LISTED
Door Hinges
76Y2



Full Mortise Short Leaf Inset

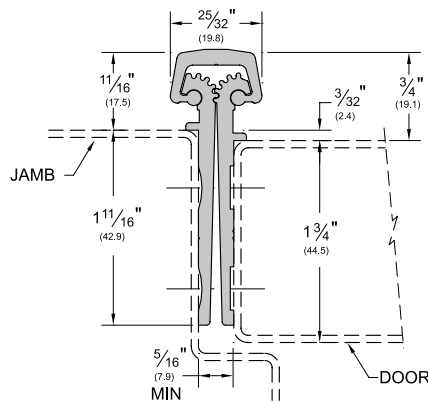
- Designed for use with doors which range between 1 3/4" to 2 1/4"
- Designed for use with hollow metal frames where the inset conforms to S.D.I. specifications for aligning doors and frames

_FM_SLI

AVAILABLE FINISHES: BL, C, D, G, PW, SN



LISTED
Door Hinges
76Y2



Full Mortise Short Leaf Flush

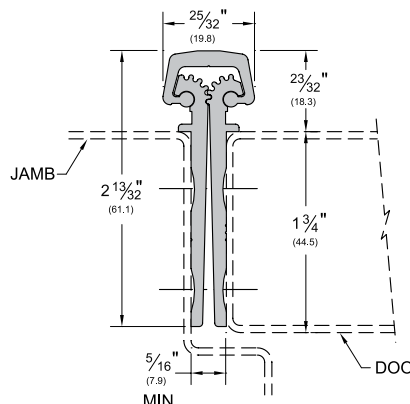
- Designed for use with doors which range between 1 3/4" to 2 1/4"
- Also used for bifold applications to keep the faces of the doors flush (not illustrated)

_FM_SLF

AVAILABLE FINISHES: BL, C, D, G, PW, SN



LISTED
Door Hinges
76Y2



AVAILABLE FINISHES FOR PRODUCTS SHOWN ON THIS PAGE (see General Information section for finish chart)

C (Clear Anodized) D (Dark Bronze Anodized) SN (Satin Nickel Anodized)

BL (Black Anodized) and PW (Painted White) are special finishes available upon request.

Special Full-Mortise Hinges

- Special Full-Mortise units are designed for door and frame applications where the hinge leaf may interfere with the weatherstrip, thermal break, or applied stop of the frame
- Special Full-Mortise hinges are applied to the frame rabbet and door face to conceal both leaves

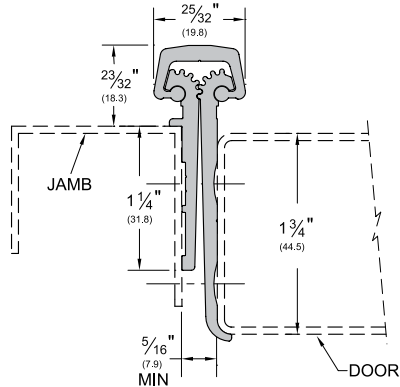
Special Full-Mortise

_SPFM

AVAILABLE FINISHES: BL, C, D, PW, SN



LISTED
Door Hinges
76Y2



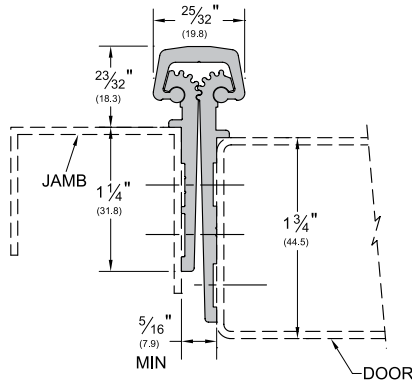
Special Full Mortise Short Leaf Inset

_SPFM_SLI

AVAILABLE FINISHES: BL, C, D, G, PW, SN



LISTED
Door Hinges
76Y2



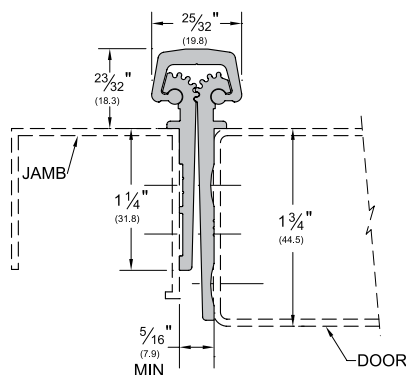
Special Full Mortise Short Leaf Flush

_SPFM_SLF

AVAILABLE FINISHES: BL, C, D, G, PW, SN



LISTED
Door Hinges
76Y2



AVAILABLE FINISHES FOR PRODUCTS SHOWN ON THIS PAGE (see General Information section for finish chart)

C (Clear Anodized) D (Dark Bronze Anodized) SN (Satin Nickel Anodized)

BL (Black Anodized) and PW (Painted White) are special finishes available upon request.

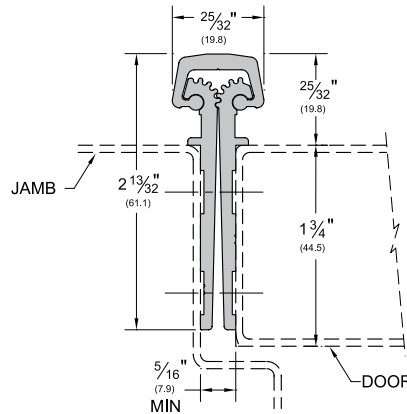
Full-Mortise Hinge

- Like our other Full-Mortise units, the Kawneer Hinges are designed mainly for new door applications and are applied to the frame rabbet and door face to conceal both leaves
- Developed for the Kawneer "Tuffline" series of aluminum doors

Kawneer Full Mortise

K_FM

AVAILABLE FINISHES: BL, C, D, PW, SN



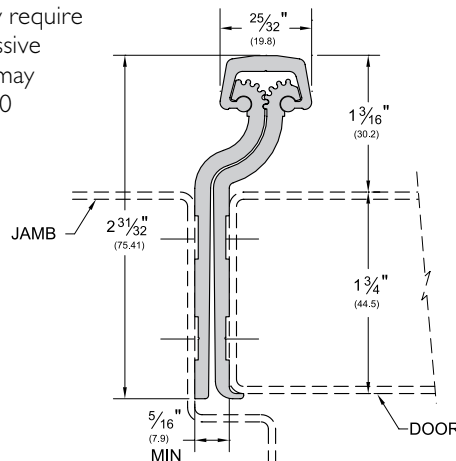
Raised Gear Hinge

- Designed for wood or metal frames with applied facing or other decorative moldings and to the frame rabbet and door face to conceal both leaves
- Certain door/frame conditions may require an extra $\frac{1}{32}$ " to $\frac{1}{16}$ " clearance. Excessive clearance on fire rated assemblies may violate the requirements of NFPA80

Raised Gear Full Mortise

_FM_RG

AVAILABLE FINISHES: BL, C, D, PW, SN



AVAILABLE FINISHES FOR PRODUCTS SHOWN ON THIS PAGE (see General Information section for finish chart)
C (Clear Anodized) D (Dark Bronze Anodized) SN (Satin Nickel Anodized)
BL (Black Anodized) and PW (Painted White) are special finishes available upon request.

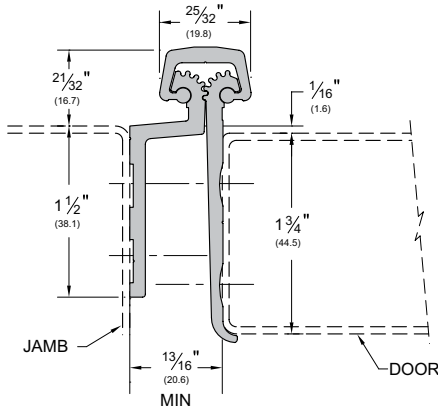
Full-Mortise Safety Hinge

- Full-Mortise Safety units are designed mainly for new door applications in child care and nursing facilities
- These hinges require extra clearance and are applied to conceal both leaves

Full-Mortise Safety

_FM_SF

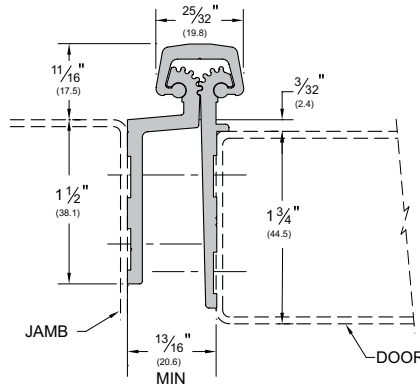
AVAILABLE FINISHES: BL, C, D, PW, SN



Full-Mortise Short Leaf Inset Safety

_FM_SLISF

AVAILABLE FINISHES: BL, C, D, PW, SN



Full Mortise Hinge for 1 3/8" Door

- More bearings than _RSI38 hinge to work in commercial grade application
- Shorter leaves for thinner doors

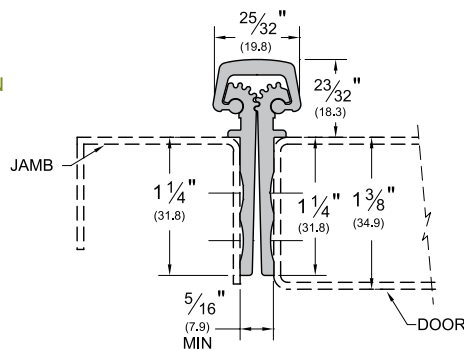
Full Mortise

FM_SLF138

AVAILABLE FINISHES: BL, C, D, PW, SN



LISTED
Door Hinges
76Y2



AVAILABLE FINISHES FOR PRODUCTS SHOWN ON THIS PAGE (see General Information section for finish chart)

C (Clear Anodized) D (Dark Bronze Anodized) SN (Satin Nickel Anodized)

BL (Black Anodized) and PW (Painted White) are special finishes available upon request.

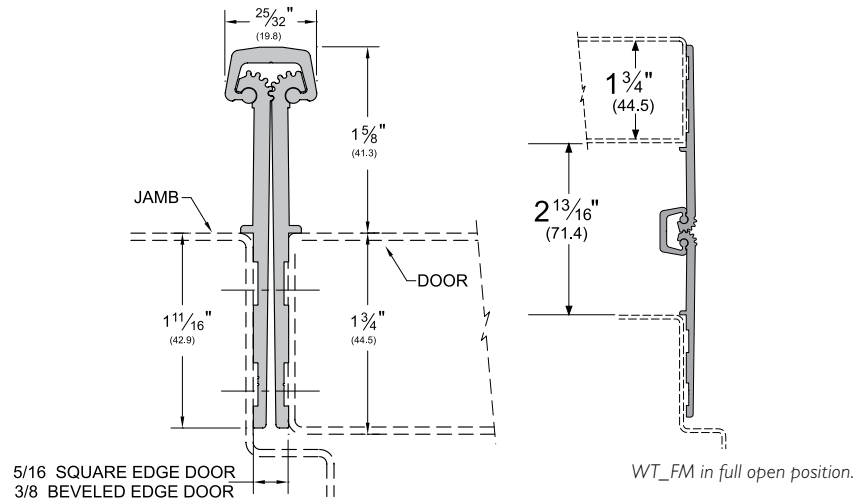
Wide Throw Full-Mortise Hinge

- Wide Throw Full-Mortise units are designed mainly for new door applications that require extra clearance due to special frame, door or wall design, and are applied to the frame rabbet and door face to conceal both leaves
- More clearance between the door and frame allows your door to open 180°
- Available only in heavy duty to support larger doors

Wide Throw Full Mortise

WT_FM

AVAILABLE FINISHES: C, D, G



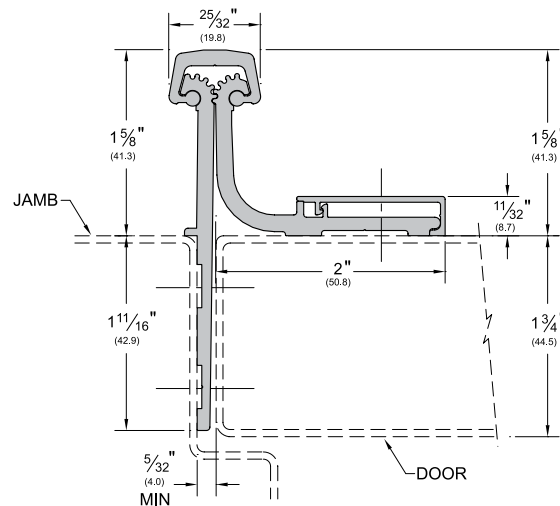
Wide Throw Half-Surface Hinge

- Wide Throw Half-Surface units are designed mainly for retrofit applications that require extra clearance due to special frame, door, or wall design and are applied to the frame rabbet and the exposed door surface
- Wide Throw Half-Surface units combine the versatility of the Half-Surface unit and the clearance of a Wide Throw hinge into one

Wide Throw Half Surface

WT_HS

AVAILABLE FINISHES: C, D, G



AVAILABLE FINISHES FOR PRODUCTS SHOWN ON THIS PAGE (see General Information section for finish chart)
C (Clear Anodized) D (Dark Bronze Anodized) G (Gold Anodized)

Half-Surface Hinge

- Half-Surface units are designed mainly for retrofit work, and are applied to the exposed surface of the door and the frame rabbet

- Designed for use with hollow metal frames, where the inset conforms to S.D.I. specifications for aligning doors and frames
- Allows for adjustments in order to properly align edge of the door to the frame

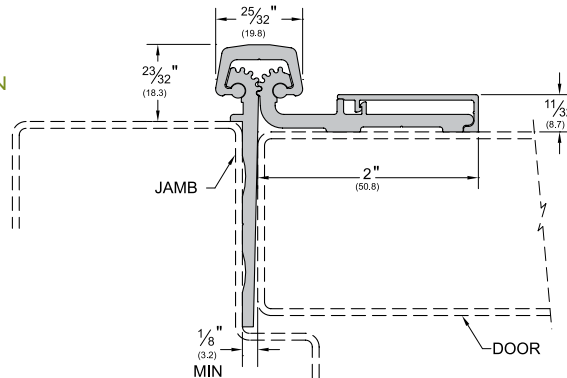
Half Surface

_HS

AVAILABLE FINISHES: BL, C, D, PW, SN



LISTED
Door Hinges
76Y2



Half-Surface Safety Hinge

- Half-Surface Safety units are designed mainly for retrofit work in child care and nursing facilities and are applied to the exposed surface of the door and the frame rabbet

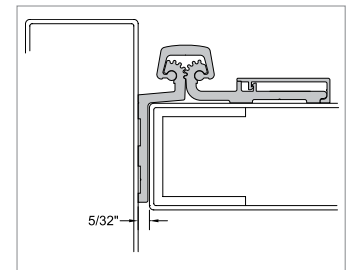
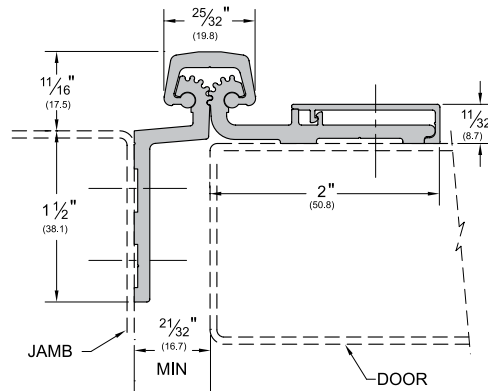
Half-Surface Safety

_HS_SF

AVAILABLE FINISHES: BL, C, D, PW, SN



LISTED
Door Hinges
76Y2



HS_SF in deep frame application.
HS_SF is no longer a safety hinge in this application.

Half-Mortise Hinge

- Half-Mortise units are designed mainly for retrofit work and are applied to the exposed surface of the frame and the door edge

- Designed to require only 5/32" clearance instead of 5/16" and also allows for adjustments to properly align edge of the door to the frame face

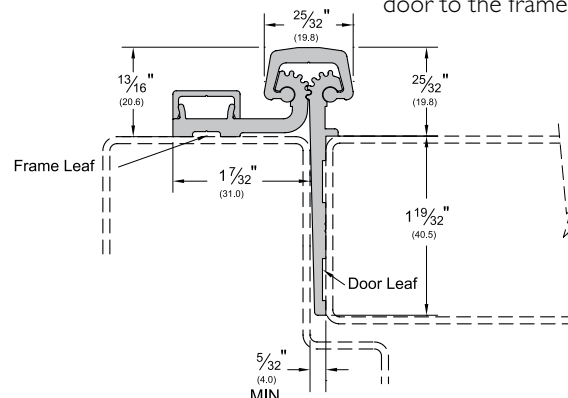
Half-Mortise

_HM

AVAILABLE FINISHES: C, D, G



LISTED
Door Hinges
76Y2



AVAILABLE FINISHES FOR PRODUCTS SHOWN ON THIS PAGE (see General Information section for finish chart)

C (Clear Anodized) D (Dark Bronze Anodized) SN (Satin Nickel Anodized)

BL (Black Anodized) and PW (Painted White) are special finishes available upon request.

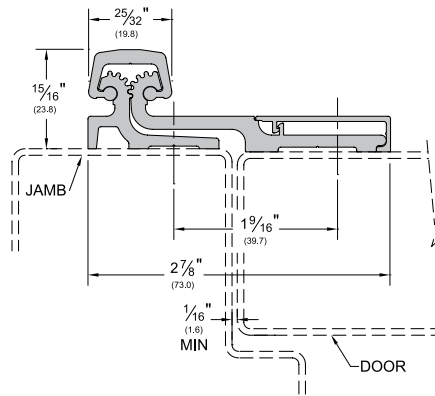
Standard Full-Surface Hinge

- Full-Surface units are designed mainly for retrofit work, and are applied to the exposed surfaces of the door and frame

Full Surface

_FS

AVAILABLE FINISHES: BL, C, D, PW, SN



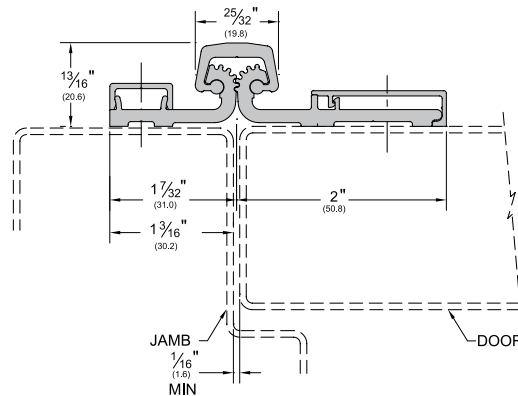
Full-Surface Center Pivot Hinge

- Full-Surface Center Pivot units are designed mainly for retrofit work and are applied to the exposed surfaces of the door and frame
- Full-Surface Center Pivot units easily replace butt hinges since no door or frame adjustments are necessary and are more versatile with restricted frame faces

Full Surface Center Pivot

_FS_CP

AVAILABLE FINISHES: BL, C, D, PW, SN



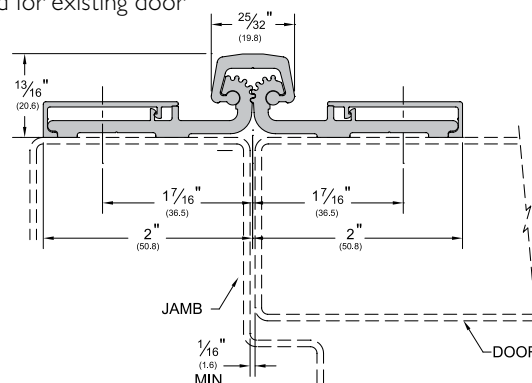
Full Surface Balanced Pivot Hinge NEW!

- Allows for easy replacement from butt hinges as the pivot point remains the same and no door or frame adjustments are necessary
- No template adjustments are needed for existing door opening/closing devices
- Equal length leaves provide an aesthetic appearance
- Good in a bi-fold application where two doors need to be hinged

Full Surface Balanced Pivot

_FS_BP

AVAILABLE FINISHES: BL, C, D, PW, SN



AVAILABLE FINISHES FOR PRODUCTS SHOWN ON THIS PAGE (see General Information section for finish chart)
C (Clear Anodized) D (Dark Bronze Anodized) SN (Satin Nickel Anodized)
BL (Black Anodized) and PW (Painted White) are special finishes available upon request.

Aluminum Hinges For Aluminum Doors Under 90 lbs.

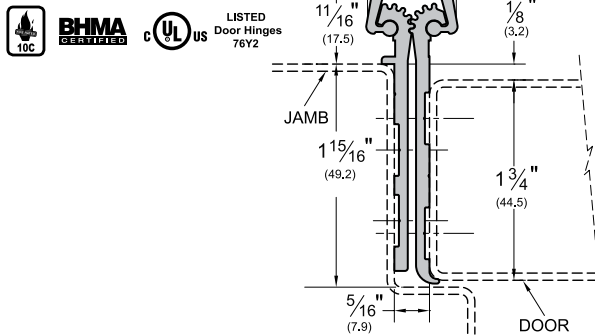
- These aluminum hinges are strictly for use on light weight aluminum doors weighing less than 90 lbs.
- Use in lieu of top/bottom pivots or butt hinges
- Less expensive than standard Full-Mortise hinges when an economical alternative is required
- NOTE: All AL series hinges are excluded from the "Life of The Opening" guarantee, and instead carry a ten (10) year warranty

Aluminum Full-Mortise

- Aluminum Full-Mortise units are designed mainly for new door applications and are applied to conceal both leaves

AL_FM

AVAILABLE FINISHES: C, D

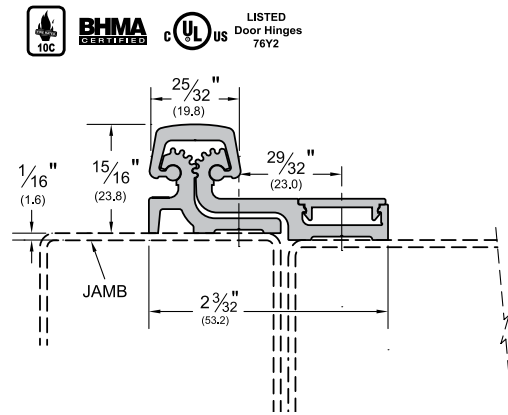


Aluminum Full-Surface Hinges

- Aluminum Full-Surface units are designed mainly for retrofit work and are applied to the exposed surfaces of the door frame

AL_FS

AVAILABLE FINISHES: C, D

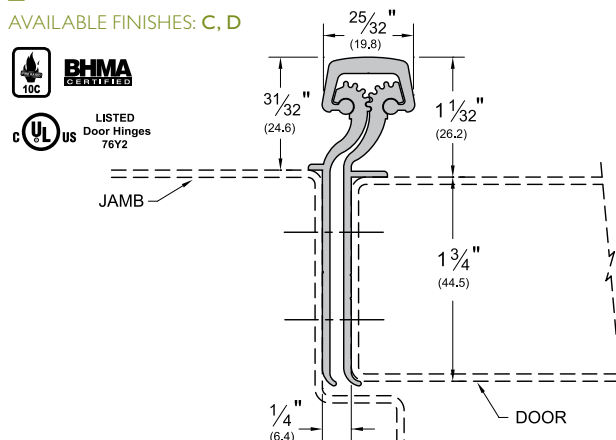


Full-Mortise Residential Hinges

- Full-Mortise Residential units are designed mainly for new door and frame applications, and are applied to conceal both leaves
- Designed for 1 3/4" MAXIMUM thickness with a weight up to 90 lbs.
- NOTE: All RS series hinges are excluded from the "LIFE OF THE OPENING" guarantee, and instead carry a ten (10) year warranty

_RS175

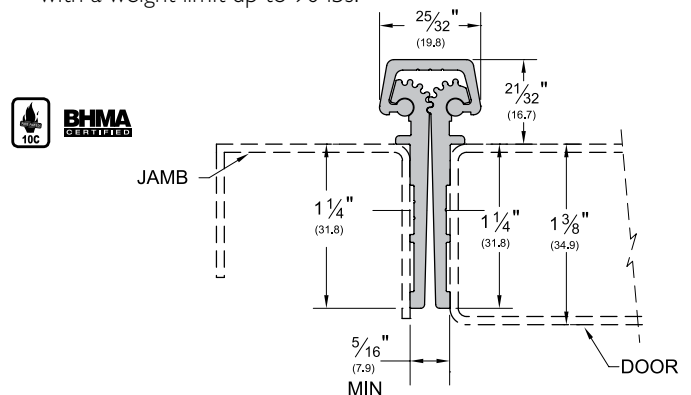
AVAILABLE FINISHES: C, D



_RS138

AVAILABLE FINISHES: C, D

- Shorter leaves for thinner doors
- Designed for doors 1 3/8" thick with a weight limit up to 90 lbs.

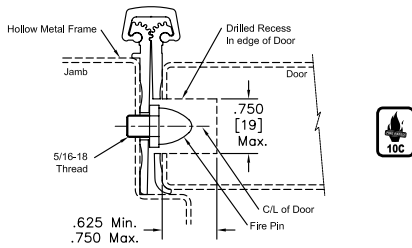


AVAILABLE FINISHES FOR PRODUCTS SHOWN ON THIS PAGE (see General Information section for finish chart)
C (Clear Anodized) D (Dark Bronze Anodized)

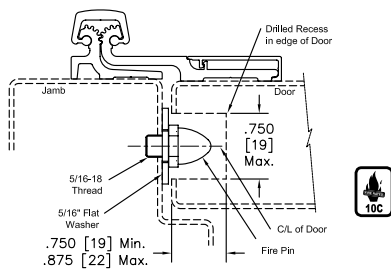
FirePins For Use With 3-Hour Fire Rated Assemblies

- **FirePins™** are required to achieve 3-hour fire rating
- Although **PemkoHinge™ Continuous Hinges** carry UL Fire Ratings unequalled in the industry, some applications may require the use of **FirePins™**
- **FirePin™** applications fall within the UL guidelines for retro-fitting assemblies in the field. Expensive shop modifications and door/frame reinforcements are not required
- **FirePins™** also add extra security to a door assembly

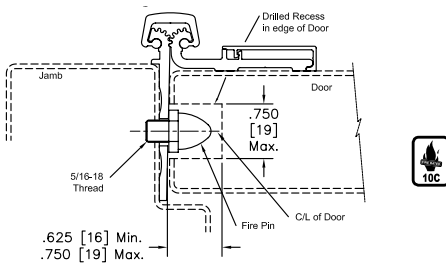
Full-Mortise Hinges



Full-Surface Hinges



Half-Surface Hinges



FirePin Locations

- The locations (illustrated right) indicate where holes should be drilled on the hinge edge of the door
- These locations are appropriate for all hinge models (Full-Mortise, Full-Surface, and Half-Surface)

