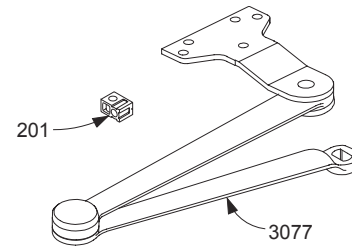


# LCN4210 SERIES

## Complete Arm Assemblies

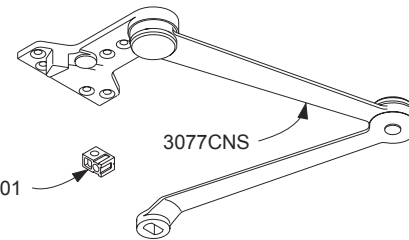
4210-3077EDA	Extra Duty Arm	F
	<i>Includes 4210 -159, &amp; -201</i>	
4210-3077CNS	Cush-n-Stop Arm	F, H
	<i>Includes 4210 -159, &amp; -201</i>	
4210-3049CNS	Hold-Open Cush-n-Stop Arm	F, H
	<i>Includes 4210 -159, &amp; -201</i>	



## Individual Arm Parts

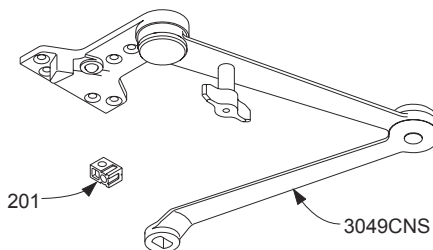
Individual arm parts for 4210-3077EDA

4210-159	Arm Screw	F
	<i>Requires TORX bit (T-27)</i>	
4210-201	Fifth Screw Spacer	



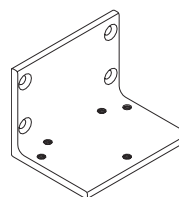
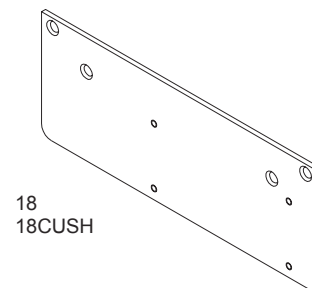
## Mounting Plates

4210-18	Mounting Plate	F
4210-18CUSH	Mounting Plate	F

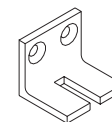


## Installation Accessories

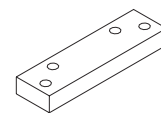
4210-30	Cush Shoe Support	F
4210-61	Blade Stop Spacer	F
4210-419	Flush Panel Adapter	F



419



30



61

Please specify finish (F), size (S), hand (H), & voltage (V) where indicated. See the latest edition of the LCN Catalog for part descriptions and specifications on many of the items shown above. List prices for items shown above can be located in the current LCN Price List.