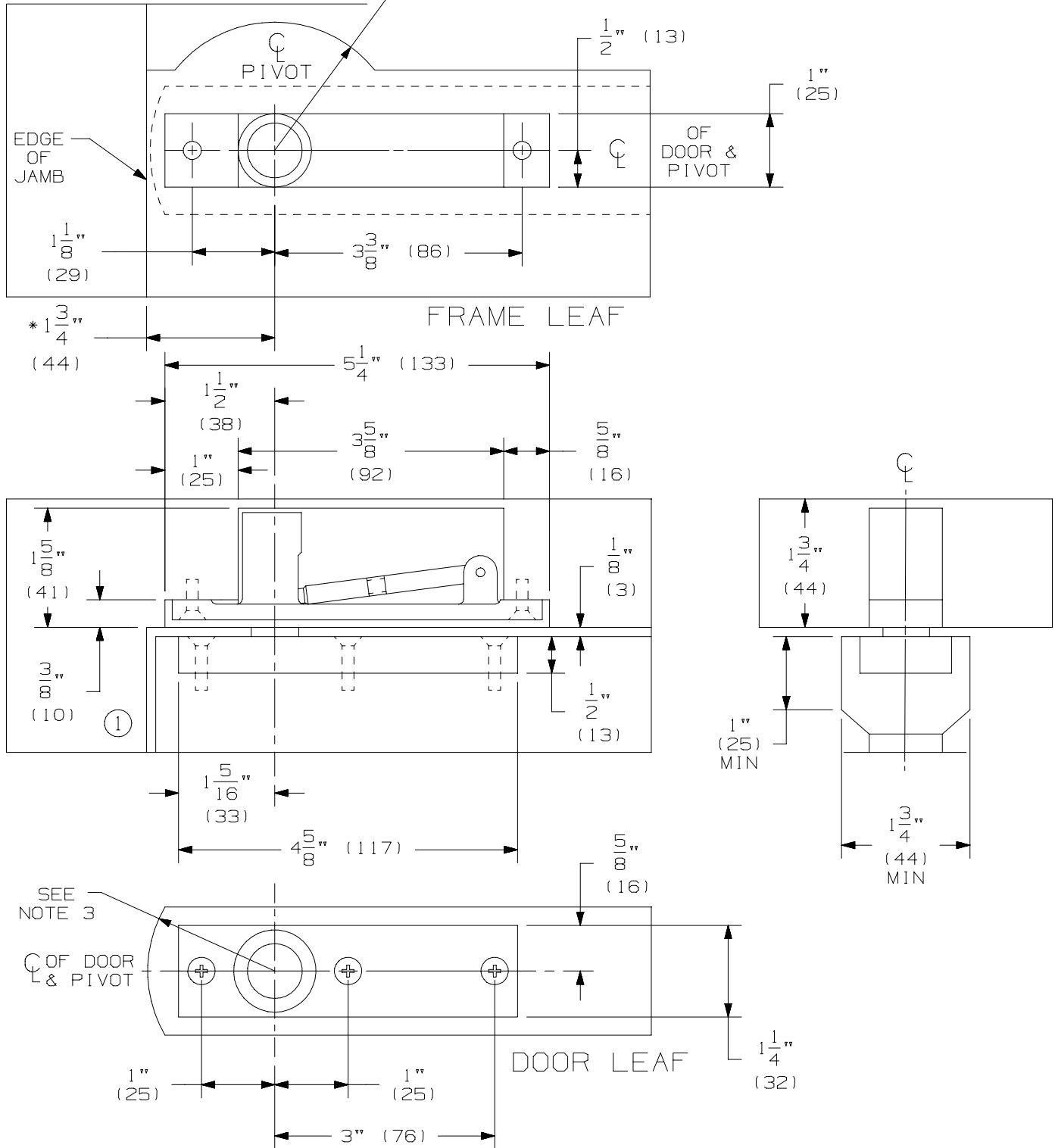


FOR SINGLE ACTING DOORS. RADIUS MUST BE CUT INTO HEAD STOP (RADIUS = PIVOT POINT TO JAMB DISTANCE - 1 3/4 MIN.)



NOTES:

1. INSTALLER MUST VERIFY THAT CENTERLINE OF TOP PIVOT POINT LINES UP WITH THE CENTERLINE OF BOTTOM PIVOT POINT.
2. BOTTOM PIVOT SET SHOULD BE MOUNTED FIRST IN MOST INSTALLATIONS.
3. RADIUS OF HEEL EDGE OF DOOR MUST NOT EXCEED PIVOT POINT TO JAMB DISTANCE. STANDARD 2" RADIUS IS SHOWN.
4. PIVOTS MFG. TO ACCEPT 1/4-20 X 3/4 FPHMS OR #14 X 1-1/2 FPHWS.
- * 5. PIVOT CENTER MAY BE VARIED AS DESIRED. MINIMUM DISTANCE IS 1 3/4 AS SHOWN.
6. REINFORCING PER ANSI/SDI-100 RECOMMENDED FOR HOLLOW METAL DOORS & FRAMES.



7255 PIVOT SET
7255 TOP PIVOT

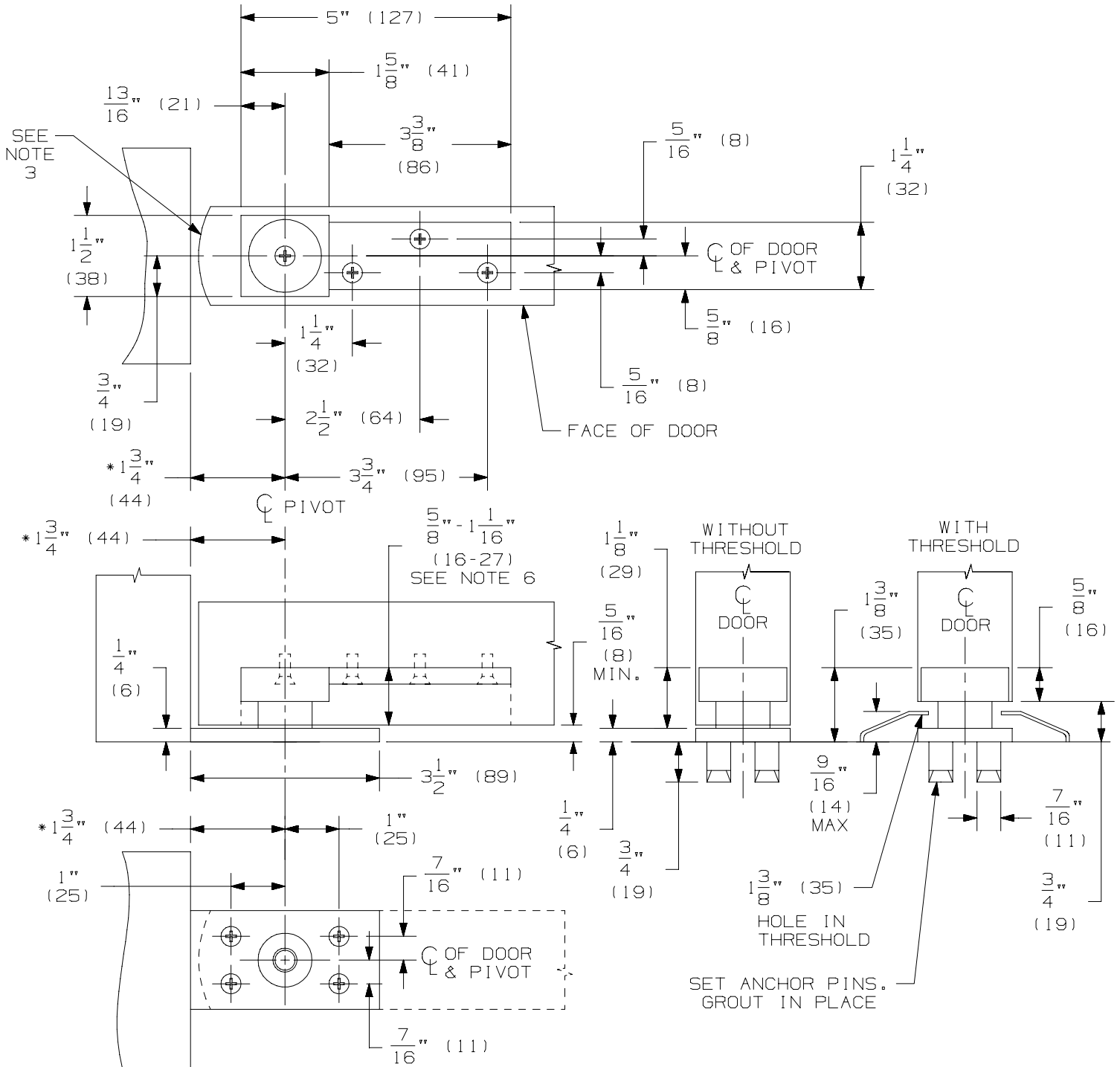


NOTE: DIMENSIONS IN () ARE MILLIMETERS.

TEMPLATE NUMBER: INST.7255_1.PG1

DATE: 05-24-02

MAX DOOR WEIGHT - 500 LBS.



NOTES:

1. INSTALLER MUST VERIFY THAT CENTERLINE OF TOP PIVOT POINT LINES UP WITH CENTERLINE OF THE BOTTOM PIVOT POINT.
2. BOTTOM PIVOT SET SHOULD BE MOUNTED FIRST IN MOST INSTALLATIONS.
3. RADIUS OF HEEL EDGE OF DOOR MUST NOT EXCEED PIVOT POINT TO JAMB DISTANCE. STANDARD 2" RADIUS IS SHOWN.
4. PIVOTS MFG. TO ACCEPT 1/4-20 X 3/4 FPHMS OR OPTIONAL #14 X 1-1/2 FPHWS.
5. IF JAMB LEAF IS INSTALLED ON TOP OF THRESHOLD, ALLOW FOR THRESHOLD HEIGHT WHEN PREPARING FRAME & DOOR MORTISES.
6. BOTTOM PIVOT WILL ACCOMMODATE 5/16" TO 3/4" DOOR CLEARANCE. DOOR MORTISE DEPTH DETERMINES CLEARANCE. 9/16" MAX THRESHOLD.
- *7. PIVOT CENTER MAY BE VARIED AS DESIRED. MINIMUM DISTANCE IS 1 3/4" AS SHOWN.
8. REINFORCING PER ANSI/SDI-100 RECOMMENDED FOR HOLLOW METAL DOORS & FRAMES.



7255 PIVOT SET
7255 BOTTOM PIVOT



NOTE: DIMENSIONS IN () ARE MILLIMETERS.

TEMPLATE NUMBER: INST.7255_1.PG2

DATE: 05-24-02