

CL OF EPT IN FRAME MUST ALIGN WITH CL OF EPT IN DOOR

RECOMMENDED 6" BELOW UPPER HINGE ON DOORS UP TO 7'0" HIGH. LOCATE 24" BELOW UPPER HINGE ON DOORS OVER 7'0" TO 10'0" HIGH. NOTE: FOR WOOD FIRE DOORS, CONSULT DOOR MANUFACTURER FOR APPROVED LOCATION.

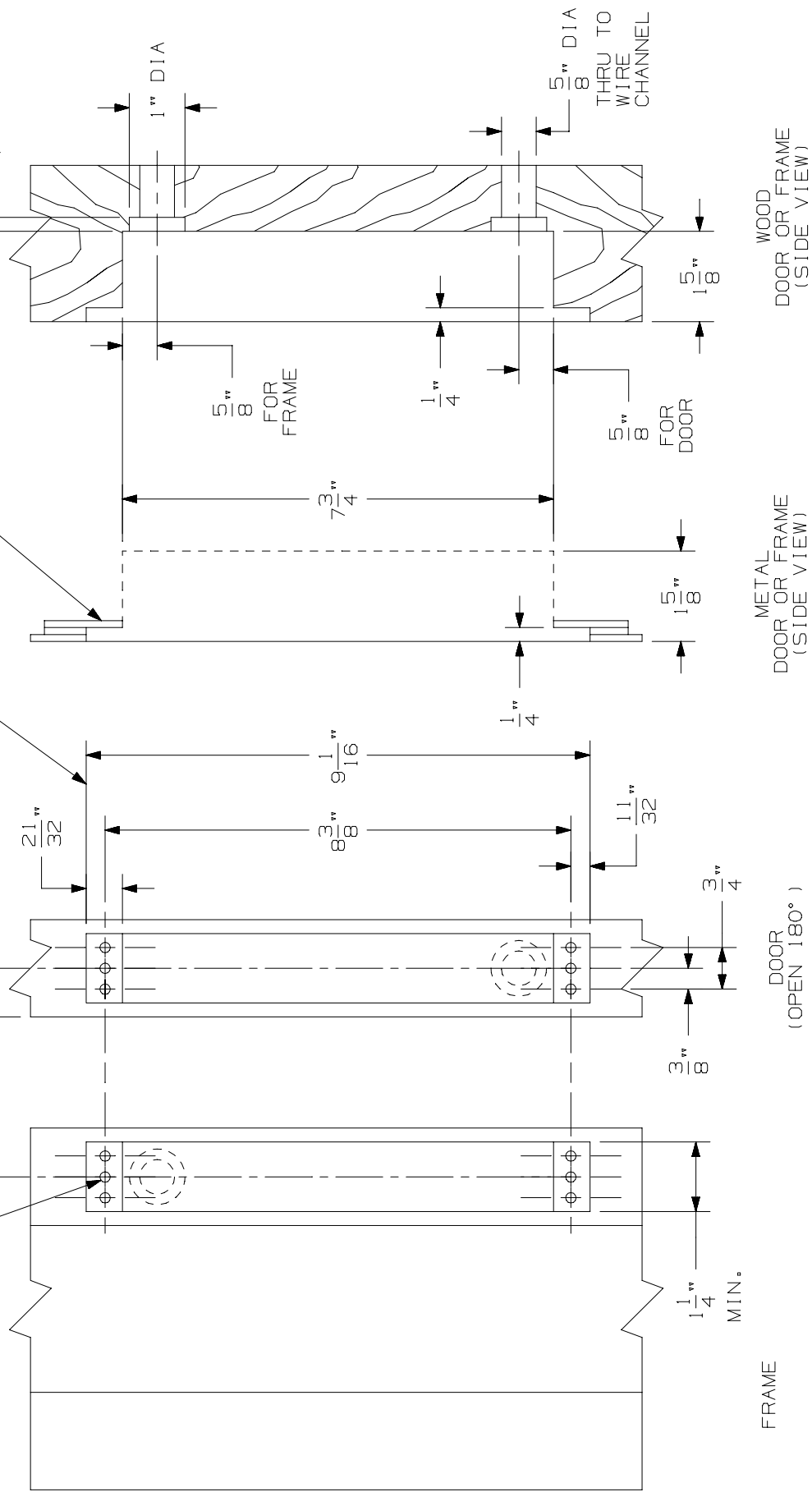
③

REINFORCEMENT .060" (16 GA.) MINIMUM

7" FROM OUTSIDE FACE OF DOOR

3 3/4" MAX. WHEN INSTALLED

WOOD: PREPARED HOLES DURING INSTALL.
METAL: #10-24 TAPPED HOLE 12 PLACES



WOOD DOOR OR FRAME (SIDE VIEW)
METAL DOOR OR FRAME (SIDE VIEW)

DOOR (OPEN 180°)

FRAME

* ALL DIMENSIONS ARE TYPICAL

POWER TRANSFER UNIT
EPT2, EPT10 & PNT1



②

NOTES:

TEMPLATE NUMBER:

W40250_3

DATE: 10-24-01