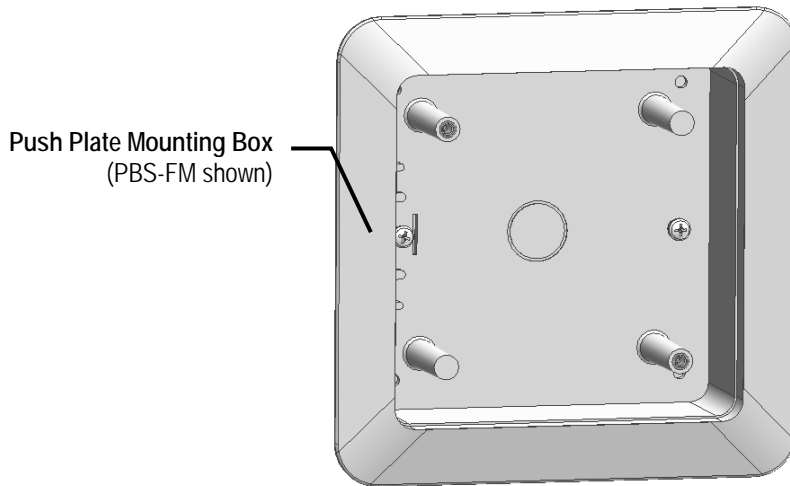


1 General Information



The push plate mounting boxes are made of durable ABS plastic.

SIZE	SERIES	SURFACE MOUNT BOX	FLUSH MOUNT BOX	WEATHER RING
JAMB 38x120mm	PBJ	PBJ-SM	PBJ-FM	NOT AVAILABLE
SQUARE 120mm	PBS	PBS-SM	PBS-FM	PBS-WR
ROUND 152mm Ø	PBR	PBR-SM	PBR-FM	PBR-WR



PBJ-SM

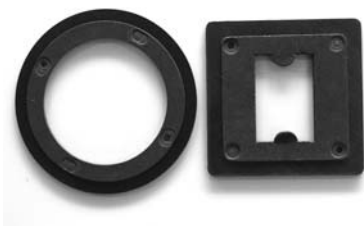


PBS-SM



PBR-SM

2 Accessories



WEATHER RINGS
Protection against extreme weather conditions



EAS RF (WIRELESS SOLUTION)
Range of radio-controlled receiver and transmitters

3 Installation

1 Preparation

Prepare the box for installation.

If the push plate is to be hard-wired to the operator, remove either the knockout on the back or bottom of the box. Then route the appropriate wire to the box.

For a wireless solution, use the EAS RF, our range of radio-controlled receiver and transmitters.

2 Mounting

Surface mounting

Hollow Wall or Solid Wall (illustration # 1)

1. Drill pilot holes in plate box as shown in Top View drawing (illustration # 3)
 - 4 holes for square and round box
 - 2 holes for jamb box
2. Drill pilot holes in mounting surface.
3. Insert appropriate fastener (screw, toggle bolt, etc.) through box and into mounting surface, then tighten box to surface.
4. Complete assembly of push plate.

Flush mounting

Hollow Wall only (illustration # 2)

1. Cut access hole into mounting surface
 - square box : 159 mm W x 140 mm H
 - 152 mm round box : 165 mm \varnothing
 - 114 mm round box : 140 mm \varnothing
2. Insert plate box into hole.
3. Tighten two Phillips head screws to tighten silver hanger to inside of the mounting surface.
4. Complete assembly of push plate.

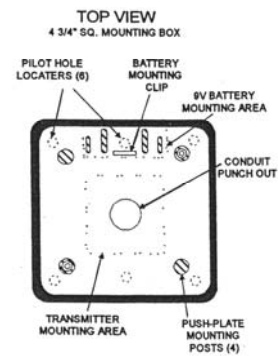
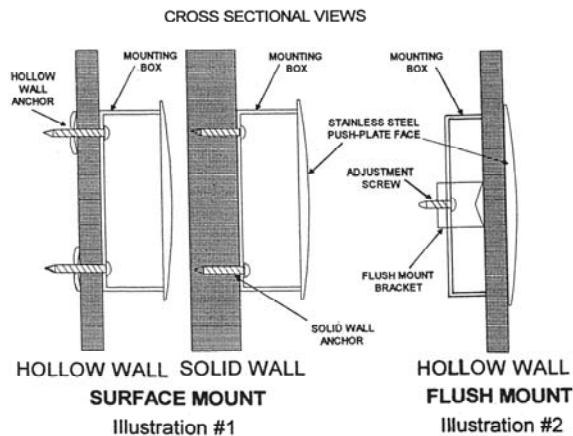


Illustration # 3